

Operating Manual v. 1.0

1 Introduction

Thank you for purchasing the MALÅ Roadway Mapper software. The MALÅ Roadway software will help you to divide long GPR files acquired with GPS data, either by simple mouse-clicks, markers or specified coordinates. Extract the files in the zip folder and start the MALÅ Roadway software application and you are ready to go.

We at Malå Geoscience welcome comments from you concerning the use and experience of this software, as well as the contents and usefulness of this manual. Please take the time to read through the instructions carefully and address any questions or suggestions to the following:

Main Office:

MALÅ Geoscience AB
Skolgatan 11
S-930 70 Malå
Sweden
Phone: +46 953 345 50
Fax: +46 953 345 67
E-mail: sales@malags.com

North & South America:

MALÅ Geoscience USA, Inc.
2040 Savage Rd, P.O. Box 80430
Charleston, SC 29416
USA
Phone: +1 843 852 5021
Fax: +1 843 769 7392
E-mail: sales.usa@malags.com

China:

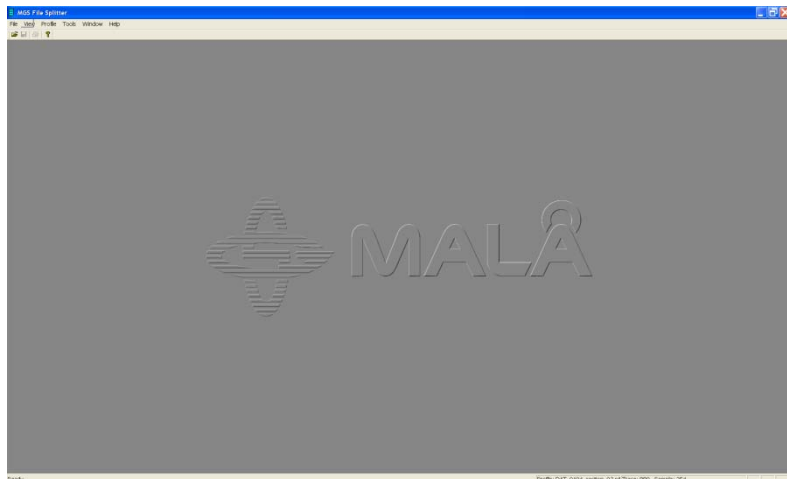
MALÅ Geoscience (China)
R.2604, Yuan Chen Xin BLDG
No. 12 Yu Min Rd, Chao Yang Distr.
Beijing 100029, China
Phone: +60 3 6250 7351
Fax: +60 3 6250 2072
E-mail: sales@malags.com

Technical support issues can be sent to: support@malags.se

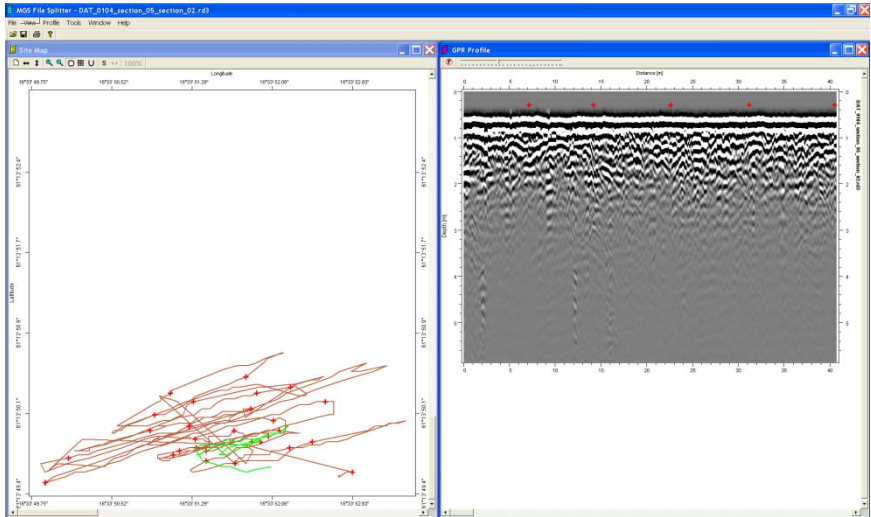
Information about the products from MALÅ Geoscience is also available on Internet: <http://www.malags.com>

2 MALÅ Roadway Software Tutorial

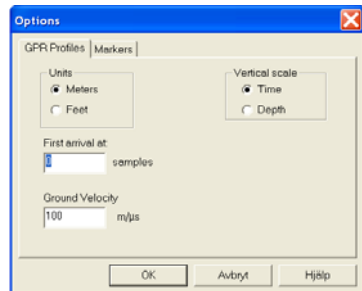
When starting the MALÅ Roadway software the main software window is displayed. Open the file to be split (File -> Open or



The radar data will be displayed at right and the Site Map at left. If Site map window is not seen, try View -> Site Map.



The appearance of the radar data can be changed with Profile Menu -> Change Palette or Edit Filter List or by Tools Menu -> Options.



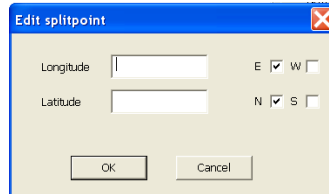
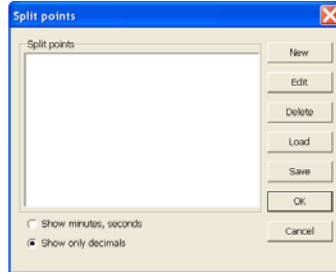
In Roadway profiles can be divided in three different ways:


- 1) By giving coordinates for the split points
- 2) By clicking on the split point on the Site Map
- 3) By using set markers as split points

1) Giving coordinates for split points

Choose View -> Split point list and Press New to fill in the coordinates for the split point to use.

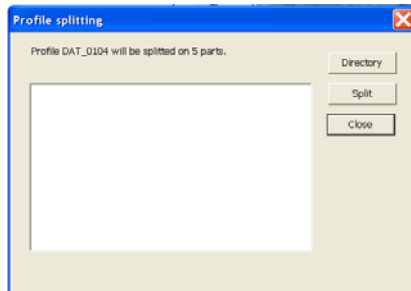
A text file with the coordinates can also be saved and reloaded. Points can be deleted or edited.



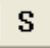
When all split points are given, press OK, and choose Tools Menu -> Make split and .

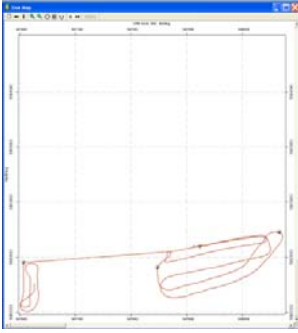
The directory of where to save the divided sections can freely be chosen.


The data file names will be extended with _section01 and so on.



2) Clicking on the Site Map

Activate the option  in the Site Map menu. Use the left mouse button to click the Split points directly on the map.




The Split points turn up as  .



Note! Split points can only be set where traces are located. Otherwise a beep warning is heard.

If right-clicking the set Split point, the following menu appear:

- Split points insertion mode
- Delete current split point
- Delete all split points
- Convert markers to splitpoints
- Splitpoints list
- Do split

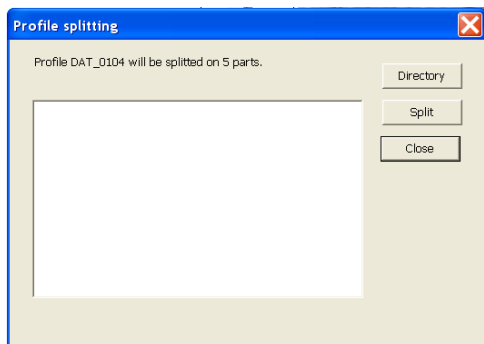
Note! To mark a split point,  , to be deleted, first unmark the **S** option.

The set points are seen in the Split point list (View menu -> Split point list). The list can be edited or saved.

When all split points are made, choose Tools Menu -> Make split and  . Or the  option in the Site Map menu.

The directory of where to save the divided sections can freely be chosen.

The data file names will be will be extended with `_section01` and so on.



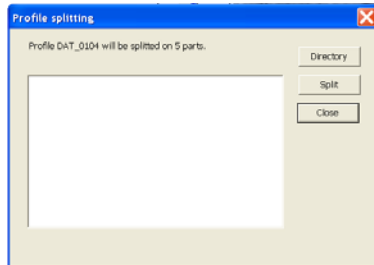
3) Using markers

If markers are set during data acquisition, these can be used to split the data. The Markers are seen in the Markers list (View-> Markers list). Choose Tools menu -> Convert Markers to Split points and then choose which of the marker types to use for splitting.

The set points are seen in the Split point list (View menu -> Split point list). The list can be edited or saved.

Then choose Tools Menu -> Make split and .

The directory of where to save the divided sections can freely be chosen.



The data file names will be extended with _section01 and so on.



Corporate Headquarters

MALÅ Geoscience AB
Skolgatan 11, SE-930 70
Malå, Sweden
Phone: +46 953 345 50
Fax: +46 953 345 67
E-mail: sales@malags.com

Offices

USA: MALÅ Geoscience USA, Inc., 465 Deanna Lane, Charleston, SC 29492
Phone: +1 843 852 5021, Fax: +1 843 284 0684, E-mail: sales.usa@malags.com

China: MALÅ GeoScience (China), Room 2604, Yuan Chen Xin BLDG, No.12 Yu Min Road
Chao Yang District, Beijing 100029
Phone: +86 108 225 0728, Fax: +86 108 225 0815, E-mail: sales@malags.com